

# PNB at McCaw Hall

Social Narrative

**PNB** PACIFIC  
NORTHWEST  
BALLET



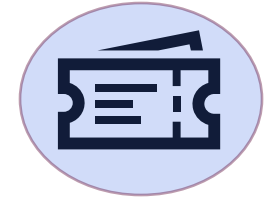


You are going to McCaw Hall to see a dance performance, which is a way of experiencing a story or sharing ideas.





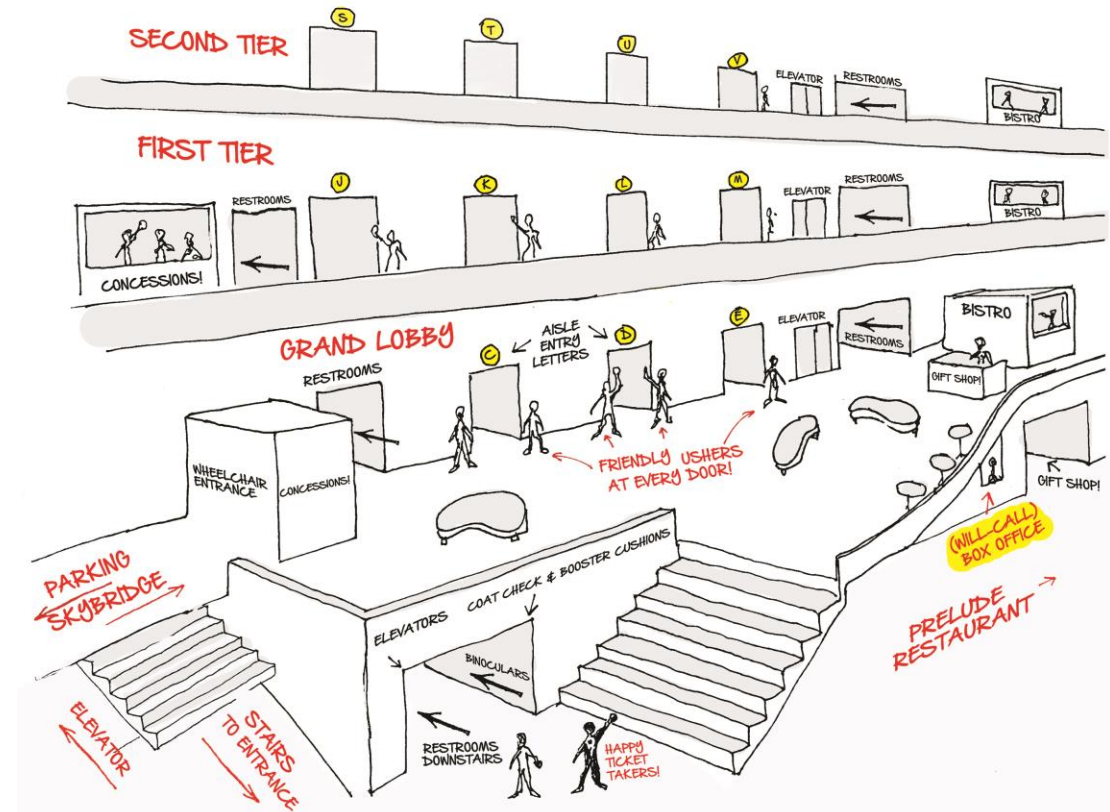
# Entering



When you get to McCaw Hall, you will walk in and an usher will check your tickets. If you don't have the tickets yet, you can wait in line at the Box Office.



An usher will ask for your ticket and scan it. The scanner makes a beeping sound. The usher will show you the direction to your seat.



# The lobby

---

The lobby is a big area where you, your family, and other audience members wait for the show to begin.

Everyone has to wait for the theatre doors to open. It can be crowded and noisy here. You can tell your family or an usher that you need a quiet spot if it is too noisy. The lobby also has places that sell snacks, drinks, and items from the ballet like shirts.





# Sensory kits



Sensory kits are available to check out for any PNB performance at McCaw Hall. You can go to the coat check desk to borrow a sensory kit.

Sensory kits have a variety of sensory tools that can be used to self-soothe.

They include:

- Communication card for non-speaking individuals
- Noise reducing headphones
- Fidgets
- A print-out of this Social Narrative

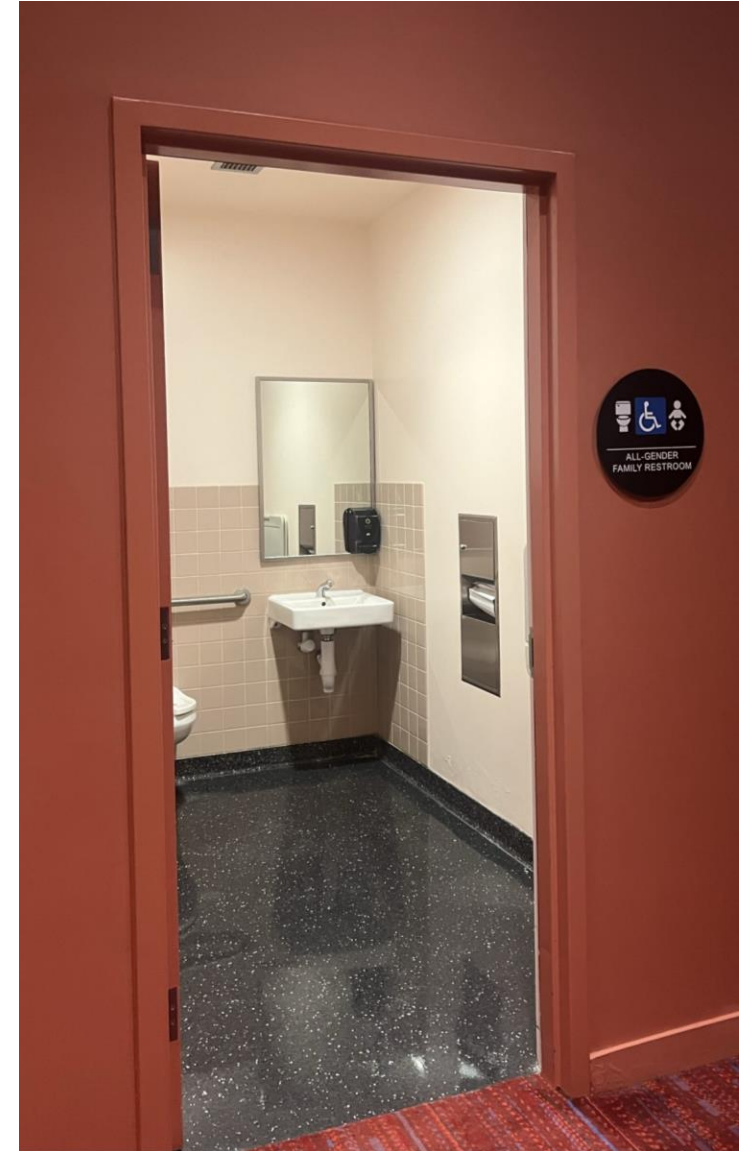


# Restrooms

---

Bathrooms are located on every level of the theatre. It is good to try to use the bathroom before the show and during intermission. Sometimes there is a line of people that want to use the bathroom.

All restrooms are accessible and accessible  
Family Restrooms are also available on the  
south end of each lobby level.



# Theatre doors

---

When the doors open to the theatre, you can line up and go into the theatre. An usher will be at the door. The usher looks at your ticket and helps you find your seat.



They may give you a program about the performance. You can look at the program with your family or friend to learn more about the performance.





# Inside the theatre

---



The theatre has lots of seats and a stage. Your ticket tells you where your seat is. The usher will help you and your family find your seats.

The seats are in rows and your seat will be with your family or friend. Your seats can be close to the stage or far away. There will be people you don't know sitting around you.

The people sitting in the seats are called the audience.



# The stage

---

The performance happens on stage. Only dancers and people that work at the theatre are allowed on the stage. The decorations on the stage are called scenery.

Sometimes there is a curtain that hides what is on the stage. Sometimes the curtain is open and you can see what is on the stage. There are no dancers on the stage before the performance starts.

Sometimes the music for the ballet is played by musicians who sit in a low area in front of the stage called the pit. Sometimes music for the ballet is pre-recorded and played through speakers in the theatre.



# During the performance

---



The lights in the theater will go darker when the performance is about to begin. Sometimes people will clap when the performance is about to start because they are excited.

People also sometimes clap:

- When the conductor of the orchestra enters the pit
- After the dancers do an amazing or difficult dance step
- At the end of a section of dancing
- At the end of the performance while the dancers bow

You can clap at these times, too, if you want to. If the clapping is too loud you can put on headphones or cover your ears. When people really like a performance, they might stand up at the while they are clapping. This is called a *standing ovation*. You can stand or sit!



# Intermission

---

Most performances have one or two breaks called intermissions. During an intermission, you can stay in your seat or you can get up and go into the lobby. Intermission is a good time to use the bathroom, get a snack, or take a walk with your family or friends.

You will know it is time to go back to your seat when you hear a bell ring in the lobby. That means the next part of the performance will begin soon.



# End of the performance

---

At the end of the performance, the dancers, and sometime the orchestra conductor and musicians, take bows on stage. People clap for them to tell them “good job!”

You will leave after the clapping is done, the dancers leave the stage, and the lights in the theatre get brighter. Everyone in the theatre will want to leave, so it will take some time to get out. It may be crowded. You will need to wait for your turn to walk out of the doors with your family. Your family and you will go into the lobby and then outside.





ALL ARE WELCOME,  
VALUED, AND RESPECTED AT



PNB.ORG/IDEA

For more information about accessibility services and programs at PNB and McCaw Hall, please visit:

**<https://www.pnb.org/season/plan-your-visit/#accessibility>**



To access sensory guides for select PNB performances, please visit:

**<https://www.pnb.org/season/plan-your-visit/accessibility/sensory-guides/>**



This guide was based on work done in partnership with Sensory Access.

[www.SensoryAccess.org](http://www.SensoryAccess.org)